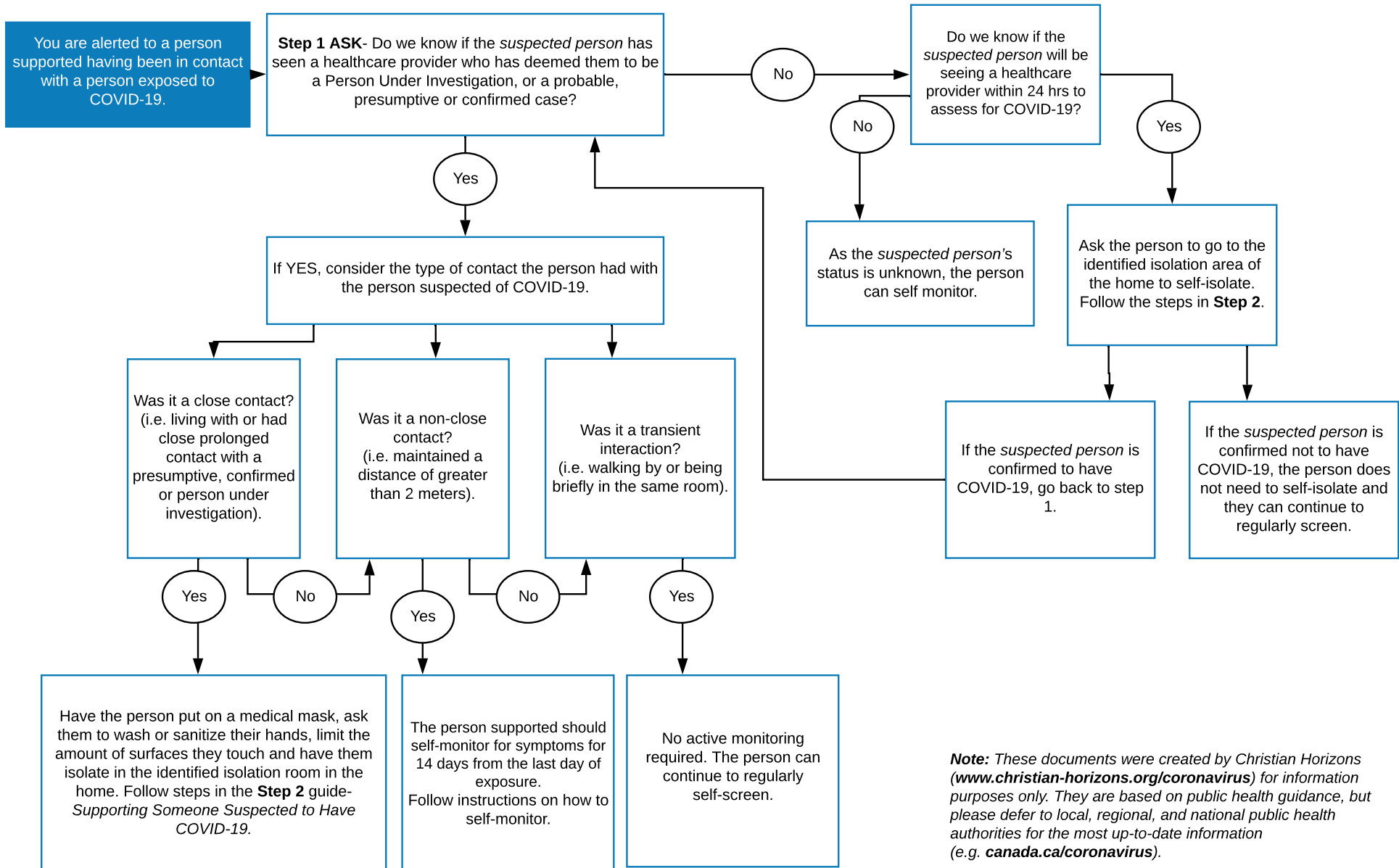


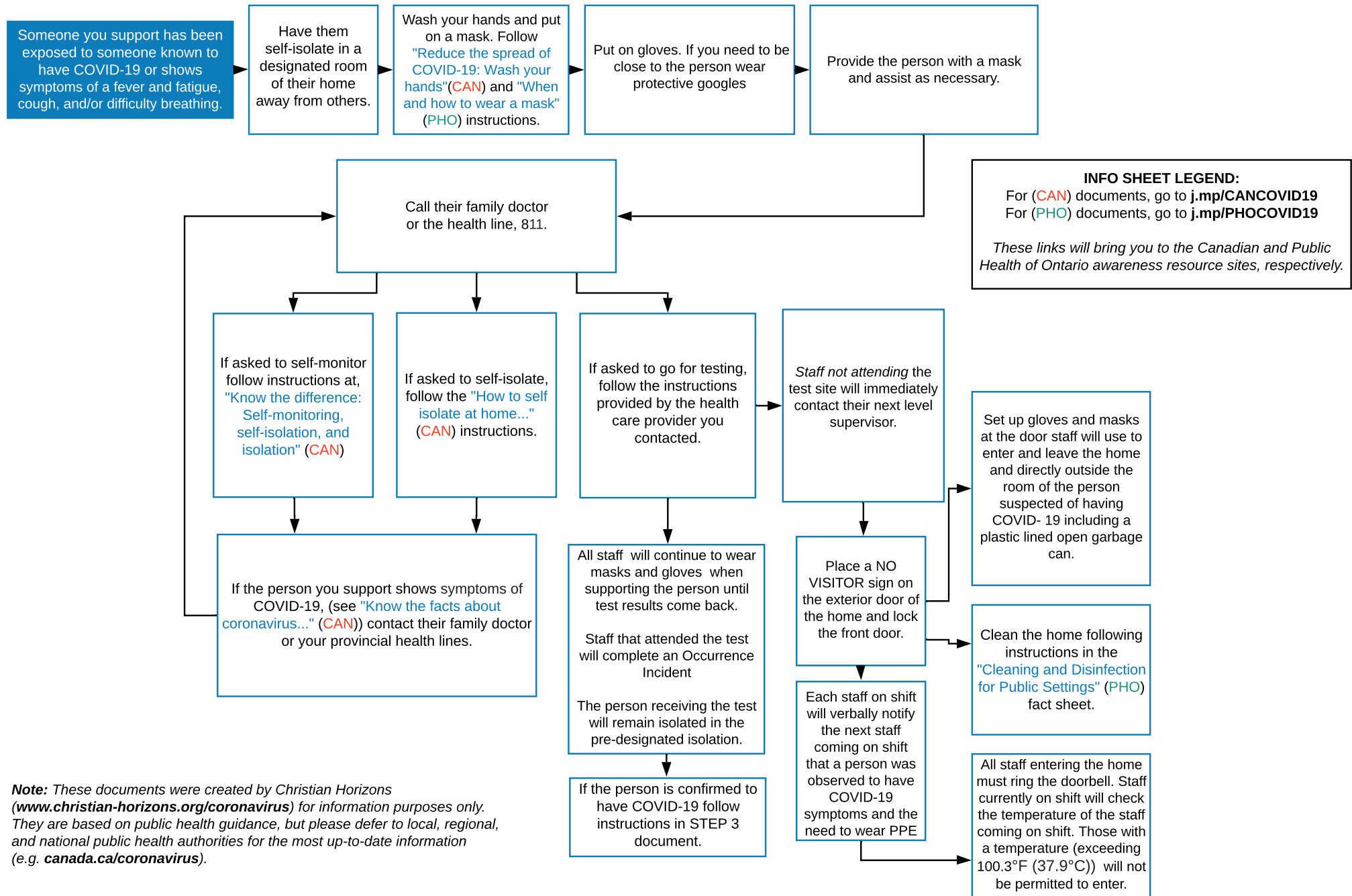
STEP 1: Guidance on COVID-19 Exposure Scenarios

Adapted from Kerry's Place



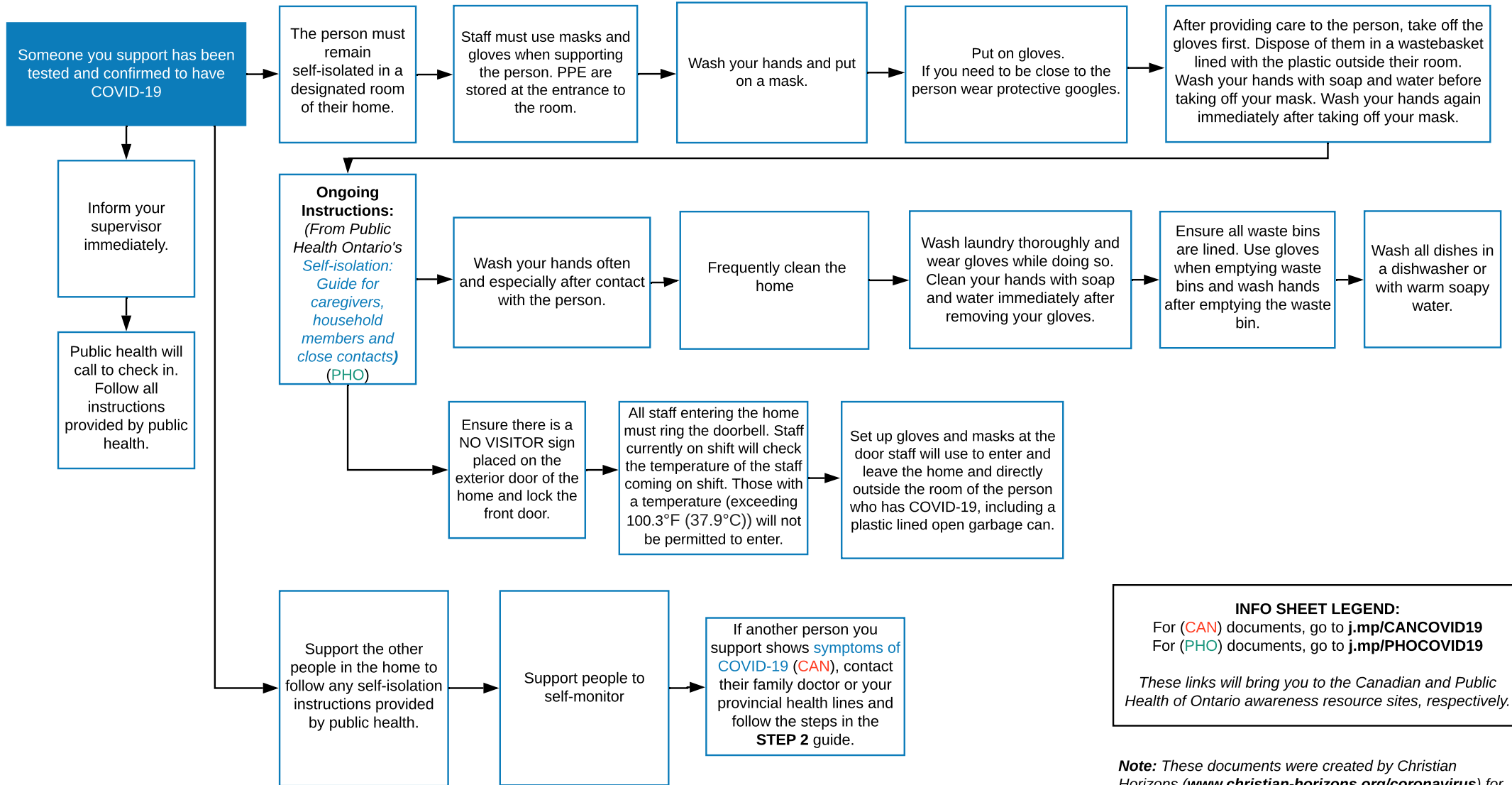
Note: These documents were created by Christian Horizons (www.christian-horizons.org/coronavirus) for information purposes only. They are based on public health guidance, but please defer to local, regional, and national public health authorities for the most up-to-date information (e.g. canada.ca/coronavirus).

STEP 2: Guidance on Supporting Someone Suspected to Have COVID-19 (SK)



Note: These documents were created by Christian Horizons (www.christian-horizons.org/coronavirus) for information purposes only. They are based on public health guidance, but please defer to local, regional, and national public health authorities for the most up-to-date information (e.g. canada.ca/coronavirus).

STEP 3: Guidance on Supporting Someone who has COVID-19



INFO SHEET LEGEND:
 For (CAN) documents, go to j.mp/CANCOVID19
 For (PHO) documents, go to j.mp/PHOCOVERID19
 These links will bring you to the Canadian and Public Health of Ontario awareness resource sites, respectively.

Note: These documents were created by Christian Horizons (www.christian-horizons.org/coronavirus) for information purposes only. They are based on public health guidance, but please defer to local, regional, and national public health authorities for the most up-to-date information (e.g. canada.ca/coronavirus).